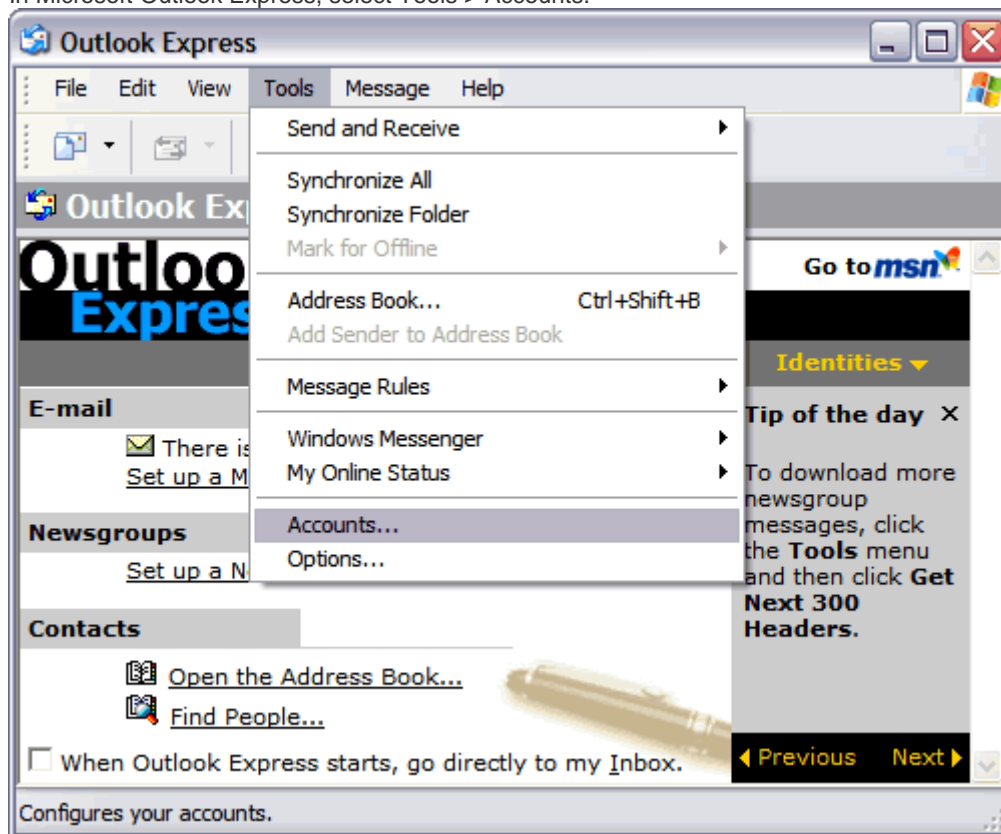


Setting Up Your E-mail in MS Outlook Express

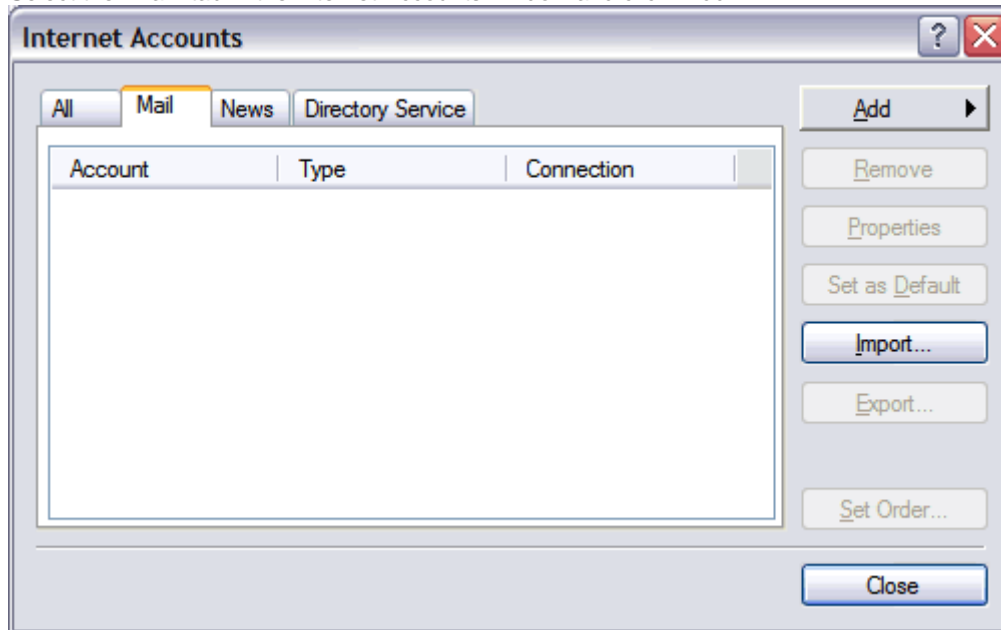
This tutorial shows you how to set up Microsoft Outlook Express to work with your e-mail account. This tutorial focuses on setting up Microsoft Outlook Express 6, but these settings are similar in other versions of Microsoft Outlook Express. You can set up previous versions of Microsoft Outlook Express by using the settings in this tutorial.

To Set Up Your E-mail Account in Microsoft Outlook Express

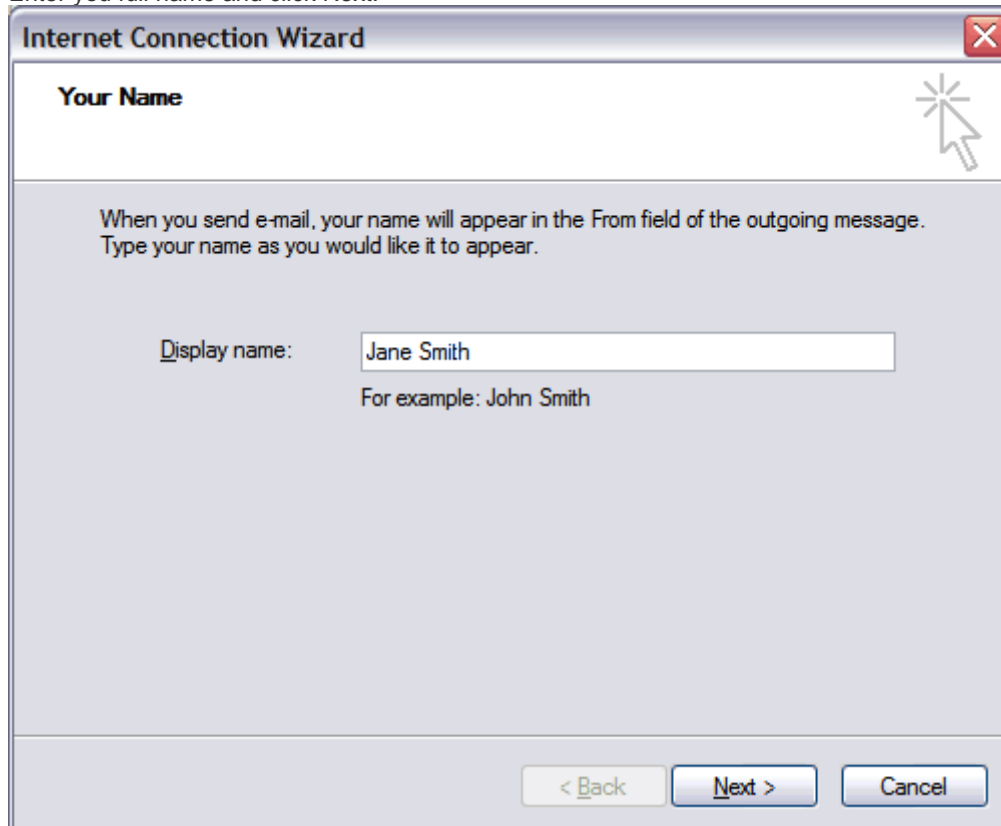
1. In Microsoft Outlook Express, select Tools > Accounts.



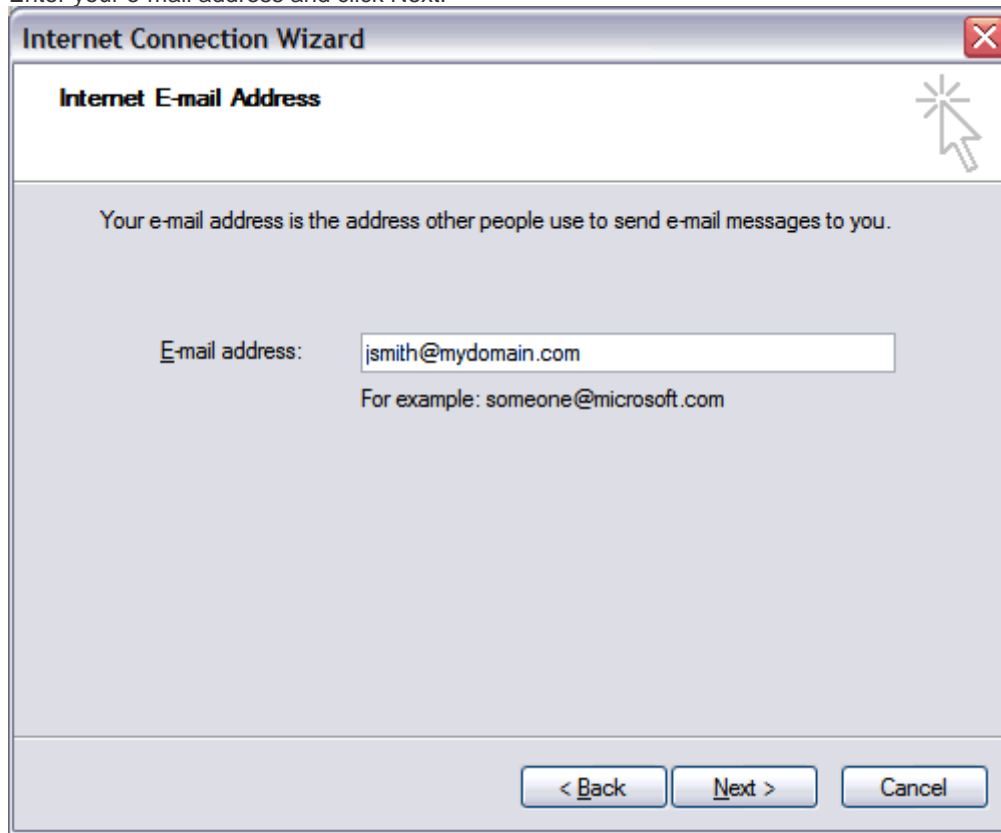
2. Select the "Mail" tab in the Internet Accounts window and click "Add."



3. Enter your full name and click Next.



4. Enter your e-mail address and click Next.



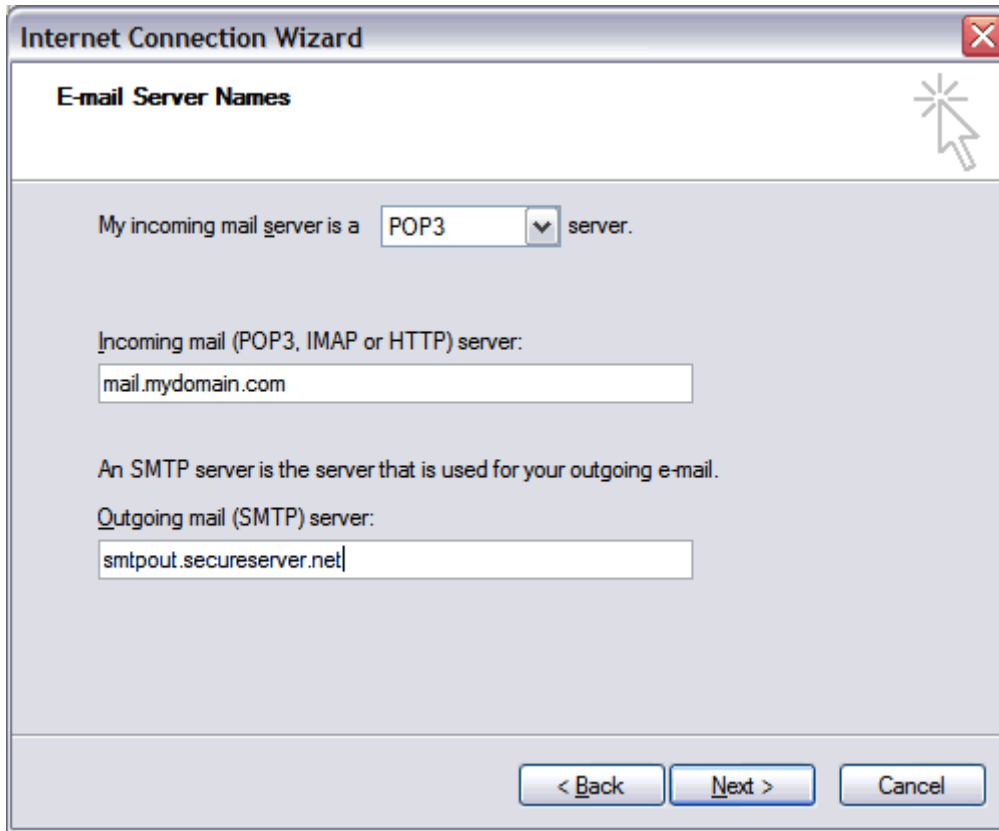
5. On the E-mail Server Names window, enter your information as follows:

My incoming mail server is a
POP3 server

Incoming mail (POP3, IMAP or HTTP) server
mail.geeksnets.com

Outgoing mail (SMTP) server
(Need to get information from Internet provider) if have Geeksnets dial up
It is mail.geeksnets.com

Click Next.



The screenshot shows a window titled "Internet Connection Wizard" with a close button in the top right corner. The main heading is "E-mail Server Names". Below this, there is a text field for the incoming mail server type, which is set to "POP3". The text reads: "My incoming mail server is a POP3 server." Below this, there is a text field for the incoming mail server name, containing "mail.mydomain.com". The text above this field reads: "Incoming mail (POP3, IMAP or HTTP) server:". Below that, there is a text field for the outgoing mail server name, containing "smtpout.secureserver.net". The text above this field reads: "An SMTP server is the server that is used for your outgoing e-mail. Outgoing mail (SMTP) server:". At the bottom of the window, there are three buttons: "< Back", "Next >", and "Cancel". A mouse cursor is pointing at the "Next >" button.

Internet Connection Wizard

E-mail Server Names

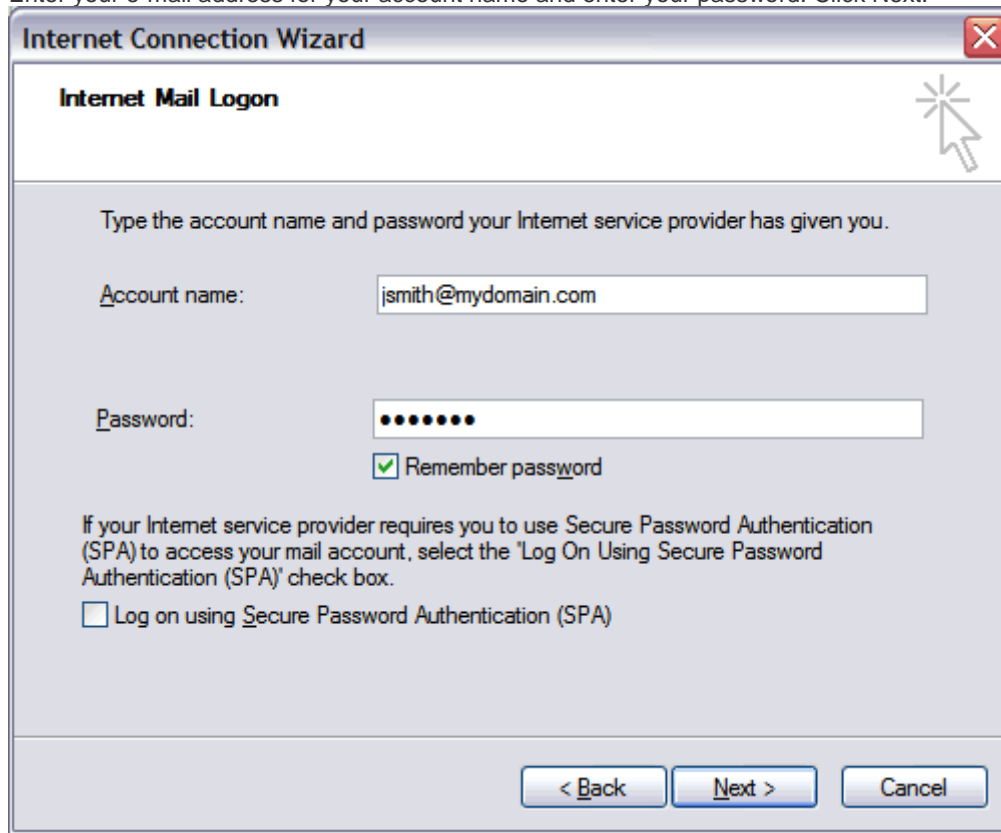
My incoming mail server is a server.

Incoming mail (POP3, IMAP or HTTP) server:

An SMTP server is the server that is used for your outgoing e-mail.
Outgoing mail (SMTP) server:

< Back Next > Cancel

6. Enter your e-mail address for your account name and enter your password. Click Next.



The screenshot shows a Windows-style dialog box titled "Internet Connection Wizard" with a sub-header "Internet Mail Logon". The dialog contains a text area for instructions, two input fields for "Account name" and "Password", a checked checkbox for "Remember password", and a checkbox for "Log on using Secure Password Authentication (SPA)". At the bottom are three buttons: "< Back", "Next >", and "Cancel".

Internet Connection Wizard

Internet Mail Logon

Type the account name and password your Internet service provider has given you.

Account name:

Password:

Remember password

If your Internet service provider requires you to use Secure Password Authentication (SPA) to access your mail account, select the "Log On Using Secure Password Authentication (SPA)" check box.

Log on using Secure Password Authentication (SPA)

< Back Next > Cancel

7. Click Finish.

